

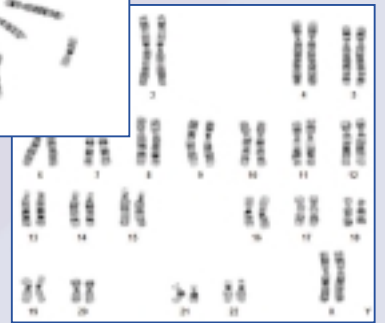
# BANDVIEW™ EXPO

## A COMPLETE BAND KARYOTYPING SYSTEM

**BandView™ EXPO** was designed to save you time without compromising results. You can rely on superb image quality and fast “smart” tools to streamline your workflow for both metaphase review and karyotyping. BandView EXPO works with ASI’s robust Case Data Manager to easily compare chromosomes, generate reports and manage your data. As part of the CytoLabView suite, upgrade to SKY®, FISH, CGH and automatic scanning is seamless.



*Excellent image quality for extracting the subtlest detail*

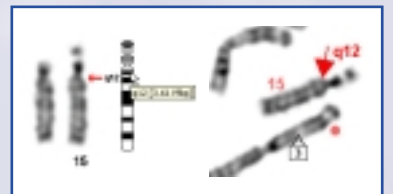


### **Superb high resolution image capture in one click**

- Superb high resolution images with 12-bit digital CCD-camera (1280 x 1024 pixels)
- Automatic adjustment of exposure and contrast for any microscope intensity level
- 4096 levels of gray in every image capture to differentiate details in banding
- Wide field-of-view (2/3” CCD) for capturing widely spread metaphases in one image acquisition
- User-defined image capture region
- Automatic XY coordinate readers to save time
- Freely interchange 100x, 60x and even 40x objectives with no hardware or software adjustments necessary
- No need to finetune contrast and thresholds

### **Flexible workflow to save time and effort**

- Original image data always preserved to easily add in faint regions during analysis
- Image changes, including segmentation, contrast and sharpness adjustments, at any stage of the analysis process
- Karyotyping at any stage in the analysis process, even before segmentation has been finalized
- Dynamic karyotype tables to suit any chromosome type or size, including the most complex hyperploidy cases
- Recursive “undo” for practically any step in the analysis process
- Full connectivity between the karyotype and metaphase to reflect any changes to the image, including brightness and sharpening



*Convenient annotation tools*

## ● **Timesaving image enhancement**

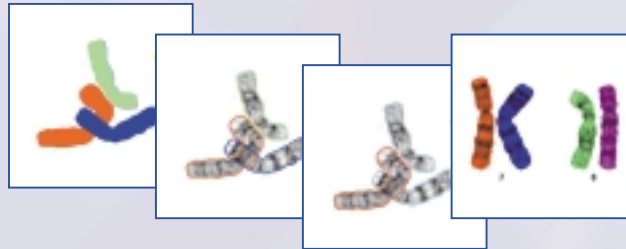
- Automatic background uniformity correction to compensate for uneven microscope illumination
- Powerful automatic and manual control over the contrast, brightness, and sharpness levels of the entire image and individual chromosomes
- Multiple default settings for immediate optimal contrast with brightfield G- or R- banding and fluorescent Q-, R-, or DAPI-banding



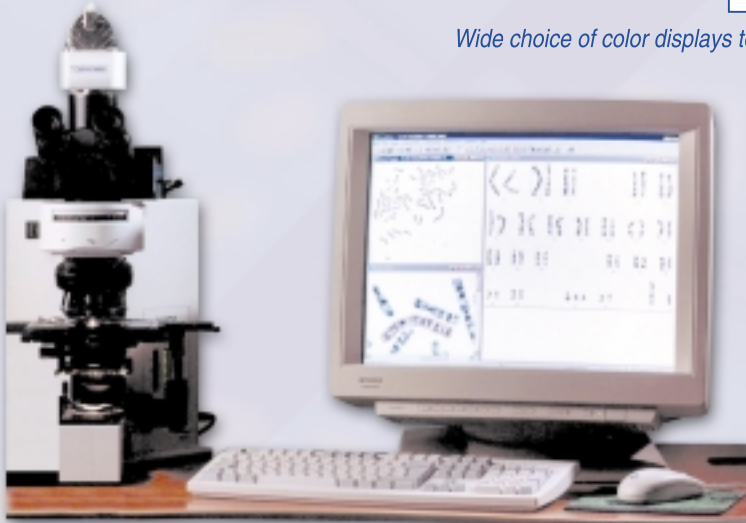
*Chromosome comparison within and between cases*

## ● **“Smart” tools to streamline the karyotyping process**

- Rapid semi-automatic chromosome counting and classification
- Easy separation of touching and overlapping chromosomes
- Quick chromosome switching and replacement with multiple drag-and-drop
- “One-click” classifier training for any sample type and band resolution to optimize automated karyotyping



*Wide choice of color displays to validate correct segmentation*



## ● **Multi-species support**

- Dynamic karyotype table to fit any number of chromosomes or species type
- Predefined ideograms for mouse, rat, hamster, and other species
- Many more features to support research of rare species

ASI Inc, North America  
Tel: +1 800 611-3466  
asi-inc@spectral-imaging.com

ASI GmbH, Europe  
Tel: +49 6203 923800  
asi-gmbh@spectral-imaging.com

ASI Ltd, ROW  
Tel: +972 4 654 7567  
asi-ltd@spectral-imaging.com

For local distributors in your area, please look at our website: [www.spectral-imaging.com](http://www.spectral-imaging.com)