

# CGHView

## HIGH-RESOLUTION COMPARATIVE GENOMIC HYBRIDIZATION (CGH)

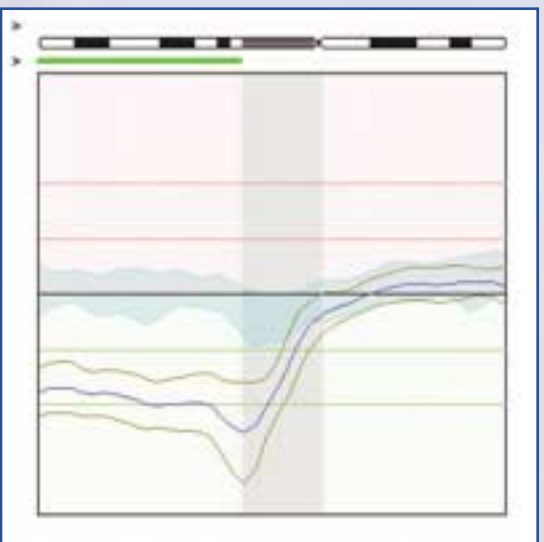
CGHView™ EXPO is a **high-resolution** CGH system with superb imaging capabilities and full karyotyping support. It is fully integrated with ASI's robust Case Data Manager to easily generate statistics, compare cells and cases, print customized reports and manage your data. As part of the CytolabView suite, CGHView is an extension of FISHView Station. Upgrading to SKY®, Karyotyping, and automatic scanning is seamless.

### ● **Powerful Automated Multi-layer Imaging**

- Superb high resolution images with 12-bit digital CCD-camera (1280 x 1024 pixels)
- Fully automatic adjustment of the exposure and intensity for full optimization of any image capture setting
- Wide field-of-view (2/3") for capturing widely spread metaphases in one image acquisition
- User-defined image capture region
- Original 12-bit data always preserved regardless of changes to image display
- Automatic correction for shift between layers
- Manual and automatic image capture for sequences including a fourth stain

### ● **Timesaving Image Enhancement**

- Automatic DAPI inversion and superb band enhancement to make classification as fast as possible
- Choice of display options to view the metaphase in original color or in pseudo colors to highlight gains and losses.
- Unique background uniformity correction and subtraction for more accurate analysis



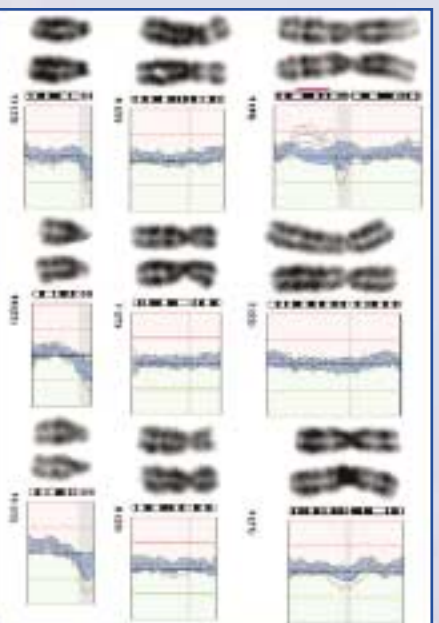
- **Variety of Tools and Display Options**
  - Automatic spine and centromere detection with interactive correction tool
  - Recursive "undo" for practically any step in the analysis process
  - Choice of chromosome display, including DAPI, inverted DAPI, single dye views, and any natural or pseudo color combination
  - Choice of profiles display, including current cell, slide average, Std, and profiles of all chromosomes from the slide or case
  - Flexible image annotation

- **Advanced Capabilities**

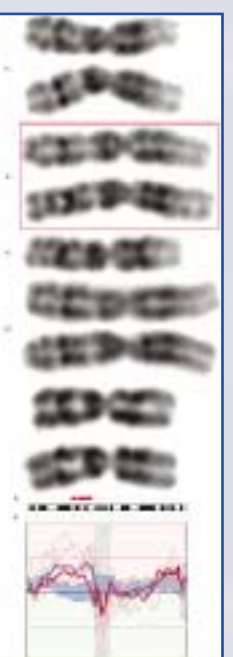
- Simple training scheme for high resolution CGH to automatically extract error probability
- Definition of gains and losses based either on fixed limits or variable limits (confidence intervals)
- Dynamic karyotype tables to support any display options
- Quick chromosome switching and replacement with multiple drag-and-drop
- Accurate automated karyotyping for even poor DAPI staining with trainable classifiers
- Calculation of quality control parameters to validate proper slide preparation and acquisition

- **Timesaving Multiple Cell and Case Comparison**

- Side-by-side display of all the chromosomes in a slide or case, both in inverted DAPI and color view
- Instantaneous exclusions of any outlier profiles
- Immediate toggle between cells of the same case
- Display profiles and gain/loss bars for all case chromosomes
- Highly unique multi-case comparison and analysis



*Partial karyotype display*



*Chromosome 1 with Zoom View*

<b>ASI Inc, North America</b> Tel: +1 800 611-3466 asi-inc@spectral-imaging.com	<b>ASI GmbH, Europe</b> Tel: +49 6203 923800 asi-gmbh@spectral-imaging.com	<b>ASI Ltd, ROW</b> Tel: +972 4 654 7567 asi-ltd@spectral-imaging.com
---------------------------------------------------------------------------------------	----------------------------------------------------------------------------------	-----------------------------------------------------------------------------

**For local distributors in your area, please look at our website: [www.spectral-imaging.com](http://www.spectral-imaging.com)**